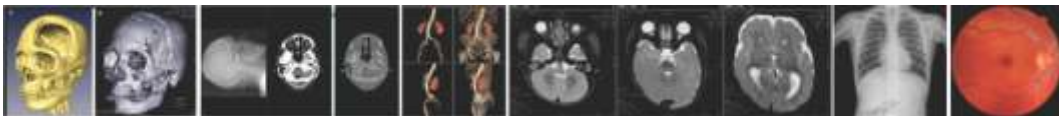


image**share**

medical images, anywhere, anytime!



 www.imageshare.co.in

ImageShare® brings a 'value based cloud' approach on technology delivery, gives time for you to focus on YOUR business.

ImageShare® Power using its cutting edge server side applications gives Radiologists versatile tools to work with diagnostic quality images and report them where ever they are even in a very limited bandwidth.

ImageShare® Lite gives clinicians freedom of view images of diagnostic quality with interactive 3D viewer and 3rd party RIS integration.

ImageShare® Goapp enables patients and physicians to view images and reports on the go using mobile devices!

ImageShare® does not require any training or installation and will support most of the popular browsers and mobile devices like the iPhone and iPad.

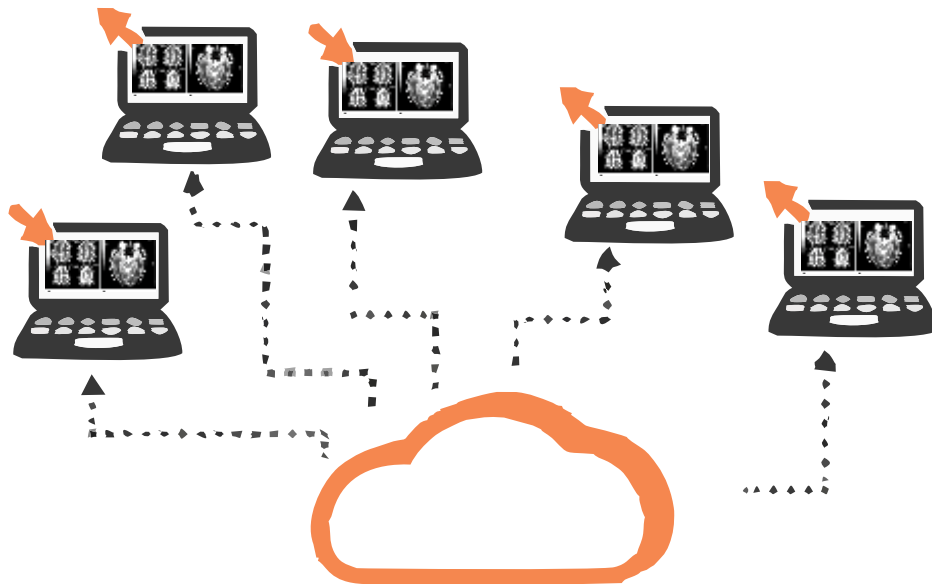
Key features:

- Completely cloud based for anywhere and anytime access.
- No downloads required and no software needs to be installed.
- ImageShare has a complete image sharing ecosystem-for radiologists, clinicians and physicians, allowing faster turnaround time and holistic care to the patients.
- ImageShare also allows for sharing and collaboration among clinicians and physicians so that faster decisions are made.
- All image processing features of a standard PACS system. Advanced 3D capabilities all delivered through the cloud.

imageshare

medical images, anywhere, anytime!

A unit of Adisan Technologies Pvt Ltd



Easy way to share medical images, online!

Solid Server side architecture:

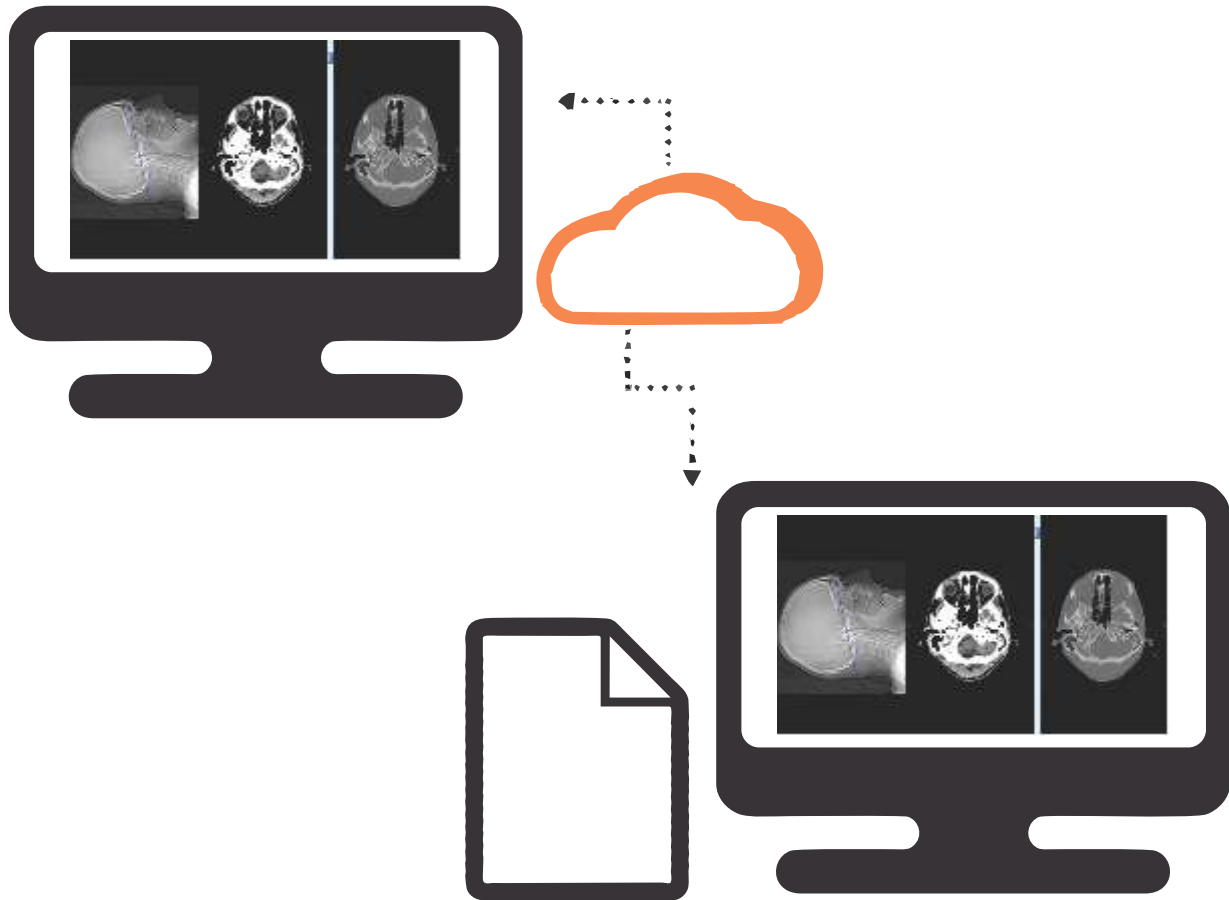
- Leverages the best architectural features of 64 bit microprocessor, by implementing tailor made back end services.
- Advanced streaming techniques for rapid image viewing.
- Network access without extra port consumption.
- Virtual domain design to ensure the secure management of images from different clinics on the same server.
- Server side 2D and 3D image rendering to reduce client side hardware requirement.
- Customized, universal and rich content worklist for different viewers (radiologist viewer, clinical viewer and mobile viewer).
- DICOM based interface to interact with any PACS and then the images can go mobile.
- Many modalities like PET, DX, CR, CT, MR, US, RF, SC, IO, NM, PT, PR are supported.
- Supports all DICOM functionalities on the cloud like DICOM Storage Storage Commitment SCP, DICOM Query/Retrieve SCP, DICOM Print SCP, DICOM Storage SCU, DICOM Modality Worklist SCU and DICOM Print SCU.



Add Power to your workflow with **ImageShare® Power** Radiology viewer!

- Can work on Microsoft IE, both 32bits and 64bits OS.
- Grayscale, Color single/multiple frame image and GSPS can be rendered.
- Rapid diagnosis level image loading on the limited bandwidth base on patented streaming technology.
- Flexible image loading modes for different radiology workflows.
- Flexible layouts up to 5x7.
- Rich measurement tools, HU, min, max, average pixel values, spine labels, line, angle and Cobb angle.
- Automatically show history exams list when current exam is loaded.
- Support spine labeling for the CT exam.
- Advanced 3D options available.

ImageShare® Lite



Feel the freedom with **ImageShare® Lite Clinician Viewer!**

- HTML5 based DICOM Image viewer which can work on Chrome, Safari and ie9+.
- Device independent, can run on the iPad, Surface Pad, Samsung and Google Pad.
- Grayscale, Color single/multiple frame image and GSPS can be rendered.
- The overlay is configurable and share the same configuration with radiologist viewer.
- The ruler is available and can be turned on/off.
- Interactive MPR/MIP/VR 3D viewer.
- Basic tools like WL adjustment, Pan, Zoom, Flip, Rotate, Reverse is provided.
- Basic annotation tools like line and angle measurement are available.
- URL based image viewer interface for 3rd party system integration.



See what you *really* want to see with
ImageShare® Goapp Mobile Viewer!

- Native coded APP which is available
- Ruler/overlay is available and can be turned on/off
- Basic tools like WL adjustment, Pan, Zoom, Flip, Rotate, Reverse are provided
- Innovative annotation tool like line and angle measurement
- Thumbnail on left part for image navigation
- Predefined WL for CT
- Rapid image accessing technology base on patented technology
- Support Cine of CT/MR images
- Simple voice based reporting tool available.
- Reporting approval included.

imageshare

medical images, anywhere, anytime!

A unit of ADISAN Technologies Pvt Ltd

For more information, contact

info@imageshare.co.in